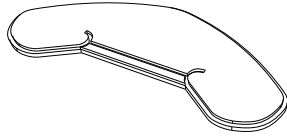
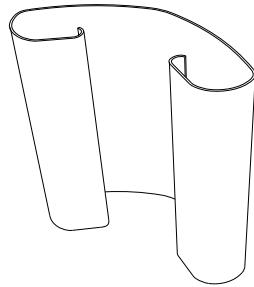


# INSTRUCTIONS SOLO Boomerang Magic

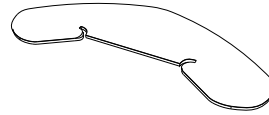
## PARTS



Base



Tensaflex

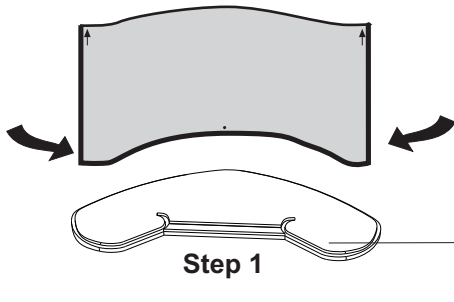


Shelve



Top

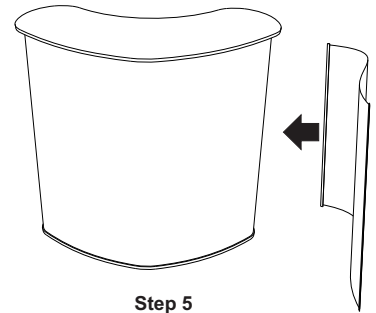
## ASSEMBLY



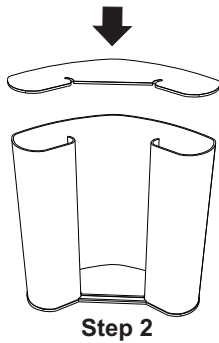
Step 1

When attaching the tensaflex, be sure to attach it to the outside hook and loop strip of parts.

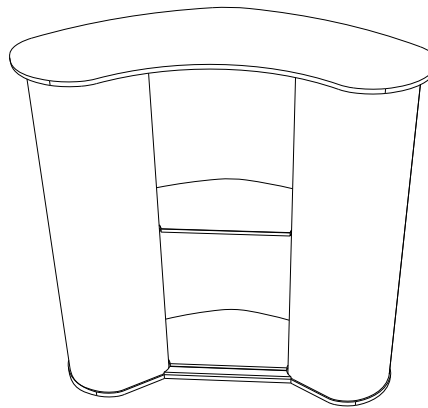
GRAPHIC ASSEMBLY



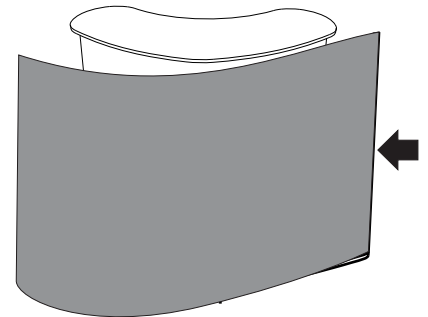
Step 5



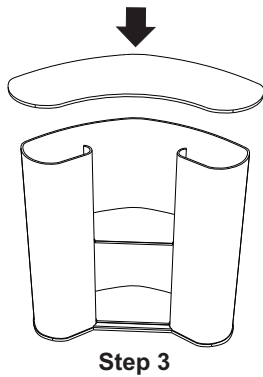
Step 2



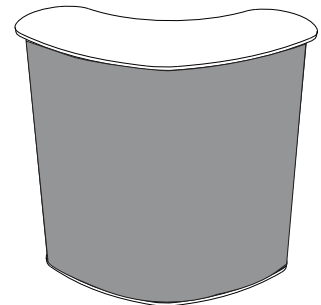
Step 4



Step 6



Step 3



Step 7