

# Economy Plus Retractor

## Product Parts

- 1 - Base
- 2 - Banner Rail
- 3 - Top Flip Lever Pole
- 4 - Pin

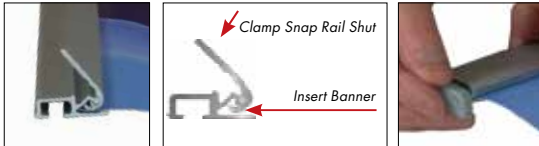
**\*Do Not Pull Pin Until Directed**



## Display Set-Up

### Step 1

Remove both endcaps from the Banner Rail (2) and snap the Banner Rail (2) open. Fully insert the top edge of the Banner into the groove of the Banner Rail (2.) Close the Banner Rail (2) & replace the endcaps.



### Step 3

Maintain tension on the banner while slowly removing the Pin (4). Allow the banner to gently roll into the canister.

**\*\*Store the Pin on the base for future graphic changes.**



### Step 5

Insert the Pole (3) into the hole in the center of the base. Ensure the pole is seated completely into the bottom half circle cutout.

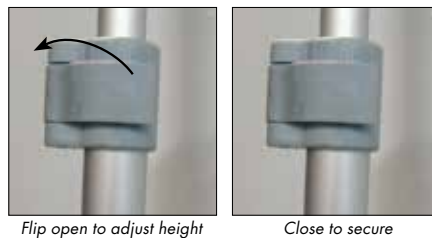


### Step 7

To adjust the height of your retractor, open the lever to raise and lower your banner.

*Do not exceed 79" high.*

Close the lever to secure your pole in place.

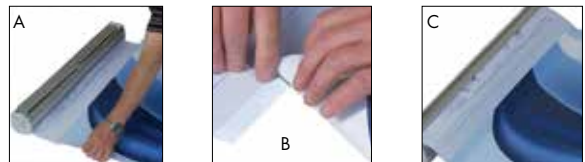


Flip open to adjust height

Close to secure

### Step 2

(A) Lay the banner flat, printed side up and align the banner to the hook on the leader. (B) Firmly and evenly press the loop on the bottom of the banner onto the hook of the leader. (C) Gently smooth out any bubbles or wrinkles where the hook & loop connect.



### Step 4

Flip the Base (1) upside down and rotate the foot to sit perpendicular to the Base.



### Step 6

While holding the Pole (3), gently lift the Banner Rail (2) up. Tilt the Base Unit (1) back and attach the Banner Rail (2) to the top of the Shock Corded Flip Lever Pole (3).



## Storage & Care

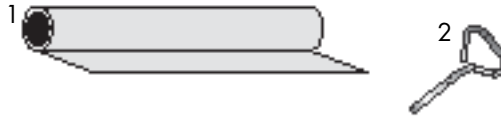
Place all product parts into Carry Case and store in a cool dry location.

To clean, wipe with damp cloth.

# Replacement Graphic

## What you will need before you start

- 1 - Graphic
- 2 - Tension Pin



\* For ease of graphic replacement, the use of a partner is recommended but not required.



## Prep Instructions

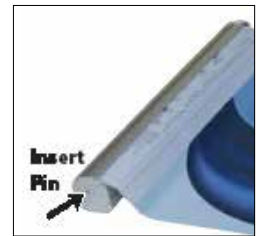
### Step 1

Locate the Tension pin on your retractor. It is usually found on the bottom of the base. A two inch finishing nail can substitute for the pin. Hold the base firmly and have your partner carefully pull the banner completely out of the base exposing the leader beyond the original graphic. This is best done laying the unit on its backside.



### Step 2

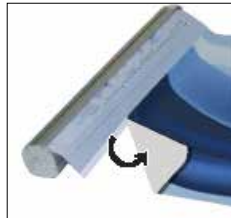
With the leader exposed and tension on the banner, fully insert the tension pin into the hole on the side of the unit preventing the axle from retracting the banner back inside. This may take your partner moving the banner slightly in or out to line the pin in its slot. If done correctly there will not be any tension on the banner and you can begin the graphic change out procedure.



## Graphic Replacement

### Step 1

Carefully remove banner from the hook on the leader. You don't want to damage or tear the leader.



### Step 2

Remove the plastic end caps from the ends of the snap rail. Snap the rail open. Note how the banner was installed in the rail so you can replicate that with the new graphic.



### Step 3

Install the snap rail on the top of the banner. Make sure the banner is all the way inserted in the snap rail. Snap the rail shut and replace the end caps



### Step 4

Press the loop from banner to the hook on the leader making sure it's completely straight.



### Step 5

Have your partner hold the top of the banner taut and then gently pull the tension pin out. Retract the new banner slowly into the base.



#### NOTE:

End Caps, Snap Rails, Tension Pins and other hardware may vary from your product, however the concept is the same.